

# How to Read the OMNI

## Quick Guide

### THE SENSUS OMNI METER

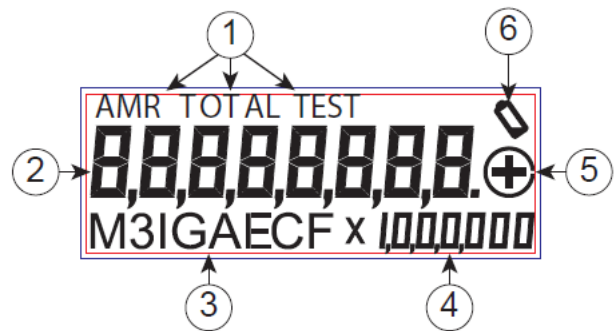
The patented measurement principles of the OMNI meter ensure enhanced accuracy ranges, an overall greater accuracy, and a longer service life than any other comparable class meter produced. The OMNI meter has no restrictions in sustained flow rates within its continuous operating range. The floating ball measurement technology allows for flows up to its rated maximum capacity without causing undue wear or accuracy degradation when installed in any orientation.

### ELECTRONIC REGISTER

The OMNI electronic register consists of a hermetically sealed register with an electronic pickup containing no mechanical gearing. The large character LCD displays AMR, Totalization and a Resettable Test Totalizer. The electronic register includes the following partial list of features:

- AMR resolution units that are fully programmable
- Pulse output frequency that is fully programmable
- Integral customer data logging capability
- Integral resettable accuracy testing feature compatible with the UniPro testing Assistant Program
- Large, easy-to-read LCD display that shows both forward and reverse flow directions
- 10-year battery life warranty

### REGISTER DISPLAY



#### 1. Reading Mode

**AMR:** Shows the reported units

**Total:** Shows the total registration through the meter (all 8 digits)

**Test:** Shows the registration through the meter, but can be reset to 0 to perform a test

2. **AMR Digit Bar** (4 to 8 Digits)—The AMR digit bar shows which digits will be reported when the meter is read through the communications interface.

3. **Unit of Measure**—Gallon (GAL), Cubic Feet (CF), Cubic Meter (M<sup>3</sup>), Imperial Gallon (IGAL), Acre Feet (AF)

4. **AMR Value Multiplier** (Only in AMR Mode)

#### 5. Flow Icon:

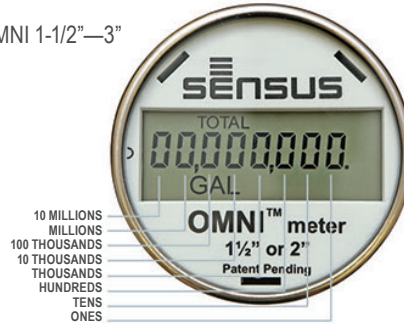
Display	Indicates
Flashing circle with +	Positive Flow
Flashing circle with -	Negative Flow
No Icon/Icon Not Flashing	Flow Stopped

6. **Battery Icon**—The Battery Icon will turn on when the battery is near the end of line (≈11 years). AMR Digits will sequentially blink before the battery dies (≈15 years).

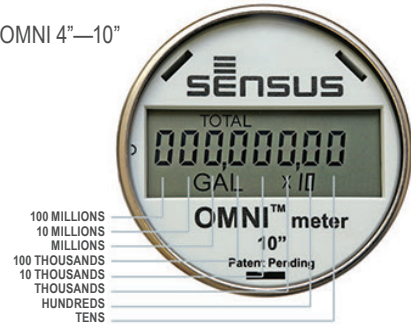
READING THE OMNI REGISTER

Gallons Registers

OMNI 1-1/2"–3"

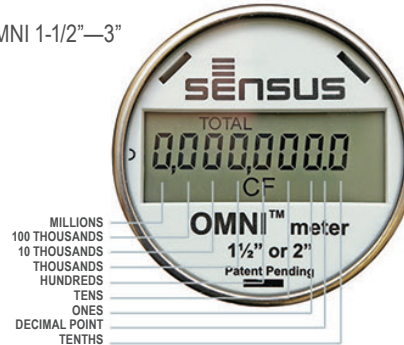


OMNI 4"–10"

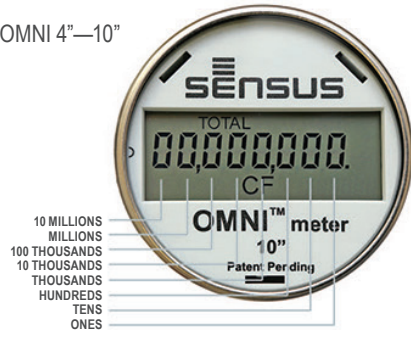


Cubic Feet Registers

OMNI 1-1/2"–3"

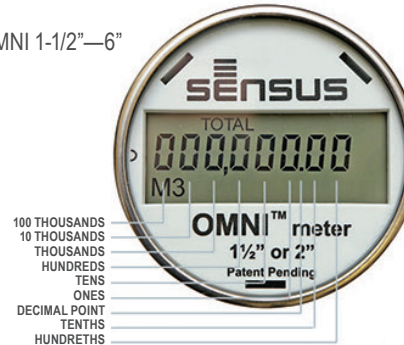


OMNI 4"–10"

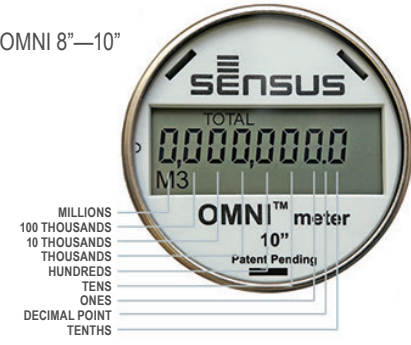


Cubic Meter Registers

OMNI 1-1/2"–6"

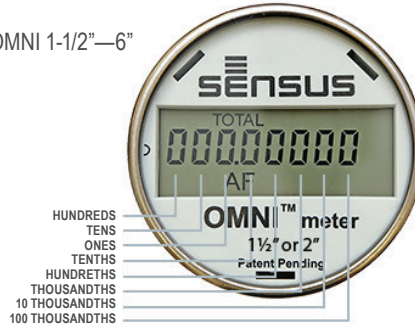


OMNI 8"–10"

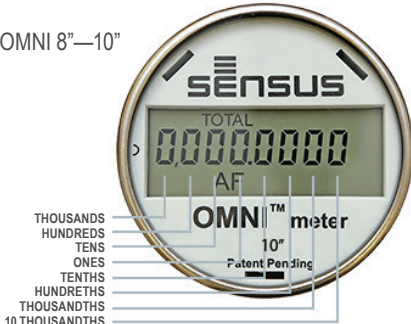


Acre Feet Registers

OMNI 1-1/2"–6"



OMNI 8"–10"



© All products purchased and services performed are subject to Sensus' terms of sale, available at either; <http://na.sensus.com/TC/TermsConditions.pdf> or 1-800-METER-IT. Sensus reserves the right to modify these terms and conditions in its own discretion without notice to the customer.

This document is for informational purposes only, and SENSUS MAKES NO EXPRESS WARRANTIES IN THIS DOCUMENT. FURTHERMORE, THERE ARE NO IMPLIED WARRANTIES, INCLUDING WITHOUT LIMITATION, WARRANTIES AS TO FITNESS FOR A PARTICULAR PURPOSE AND MERCHANTABILITY. ANY USE OF THE PRODUCTS THAT IS NOT SPECIFICALLY PERMITTED HEREIN IS PROHIBITED.